

THE  
**CAVENDISH**  
HOTEL

## SUNDAY LUNCH

Served 12pm - 4pm

### To START

Pink Grapefruit and Vodka

Cured Salmon

*Shrimp Sapphire*

£16

Chatsworth Kitchen Garden Soup

*Bread & Butter*

£9

Confit Chicken and Leek Terrine

*Celeriac Remoulade, Toasted Sourdough*

£16

Chatsworth Kitchen Beetroot Salad

*Caramelised Apple, Chicory*

£13

---

### To FINISH

Apple Crumble

*Stem Ginger Custard*

£14

Chocolate Mud Pudding

*Vanilla Ice Cream*

£15

Vanilla Cheesecake

*Seasonal Garnish*

£14

Selection of Courtyard Dairy Cheeses

*Homemade Accompaniments*

£17

### To FOLLOW

Derbyshire Roast Lamb

*Yorkshire Pudding, Seasonal Vegetables, Gravy*  
£29

Derbyshire Roast Beef Striploin

*Yorkshire Pudding, Seasonal Vegetables, Gravy*  
£29

Roast Chicken Breast

*Yorkshire Pudding, Seasonal Vegetables, Gravy*  
£29

Cod Fillet

*Olive Oil Potatoes, Green beans,  
Kale and Roast Fish Sauce*

£32

Butternut Squash Risotto

*Goats Curd, Crispy Sage*

£24

### SIDES

Roasted Root Veg

£6

Parsley and Garlic Mash

£7.50

Chunky Chips

£6

Black Truffle Parmesan Fries

£7.50

Seasonal Greens

*Burnt Leek Butter*

£6

A 10% service levy is added to all accounts & distributed directly to staff. Wherever possible we will do our utmost to meet dietary requirements. Some products in our range contain nuts and other allergens. As a result traces of these could be found in other products served here. An allergen menu is available for your information. Please ask any member of staff for advice.

# THE CAVENDISH HOTEL

## SHEFFIELD HONEY COMPANY

The honey in our recipes is supplied by Sheffield Honey Company – an award-winning artisan producer of the finest raw and unprocessed honey. Their bees are kept in secluded hives on the Chatsworth Estate where nectar and pollen are in abundance during the summer months. This provides the perfect environment for bees to thrive in and produces delicious tasting honey for our restaurant.



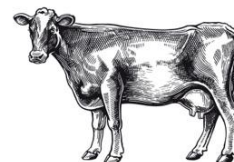
## CHATSWORTH GAME

The venison featured on our menus is sourced from the Chatsworth Estate. A close knit team of three ensure the deer and pheasants on the estate are healthy and well-managed, in cooperation with the British Game Alliance. Sustainable wildlife management is an integral part of the team's day-to-day activities, ensuring both the habitat and animals are well looked after.



## CHATSWORTH BEEF AND LAMB

All of the beef and lamb that features on our menus is sourced from Chatsworth Farm Manager, David Howlett. David rears a native breed of cattle that have free run of the fields and are able to forage on berries, crops and grass. We use as much of the cow as possible, even down to re-distributing small bits of cut to a local pie company.



## BROCK & MORTON

Brock and Morten pride themselves on producing the finest cold pressed rapeseed oil. Since starting in 2013, they have created several fabulous flavours which have been added to their oil range. Their oils offer big flavours that are versatile in the kitchen and don't compromise on nutrition. Only the best quality home grown seeds are selected for pressing, the oil is then made using traditional methods that don't use additives but do use a great amount of passion and care.



## RG MORRIS

Ladybower Reservoir is the largest of three reservoirs in the Upper Derwent Valley, famous for their connection to the legendary Dambusters.

Located nearby in the village of Buxton is RG Morris – a family-run supplier of the finest quality Ladybower Trout. All fish is caught using sustainable methods to ensure the fish of Ladybower can be enjoyed for generations.

## WYE BAKEHOUSE

Based in Bakewell, Wye Bakehouse supply our restaurants with fresh bread and sourdough daily. Wye Bakehouse has two different sourdough cultures, one made with rye flour and another made with white, and they refresh them, with equal parts of water and flour every day. Their sourdoughs are mixed in the early hours of the day and are left to ferment for up to 12 hours before being baked.



## CHATSWORTH KITCHEN GARDEN

Home-grown fruit and vegetables are supplied to us by our very own Chatsworth Kitchen Garden. All manner of fruit, salad, cut flowers and vegetables are grown here. Our chefs collaborate closely with the garden team and we plan our menus around the planting so it's extremely seasonal and fresh. We're proud to say that the Kitchen Garden has zero waste, with all harvested produce being used in the house, our restaurant, The Stable Yard and Chatsworth Farm Shop. All food waste is made into compost and sent back to the gardens each week to help the fruit and vegetables to grow.



## THE MUSHROOM EMPORIUM

Robyn Schultz is the owner of The Mushroom Emporium, who grow a range of mushrooms in a controlled environment on the Chatsworth Estate. Every care is taken by the team to ensure a healthy harvest of mushrooms so you can enjoy them in our restaurant.

